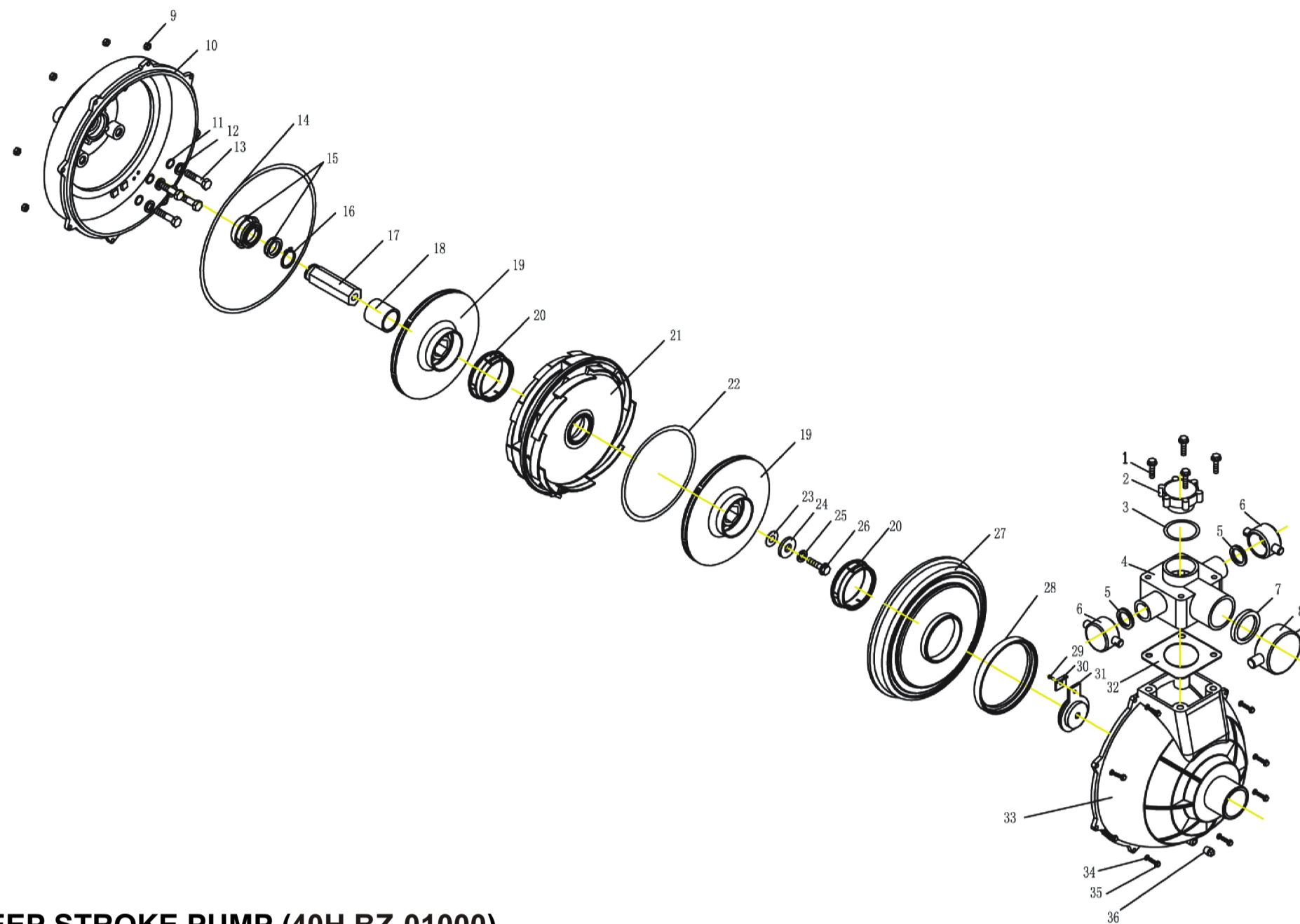
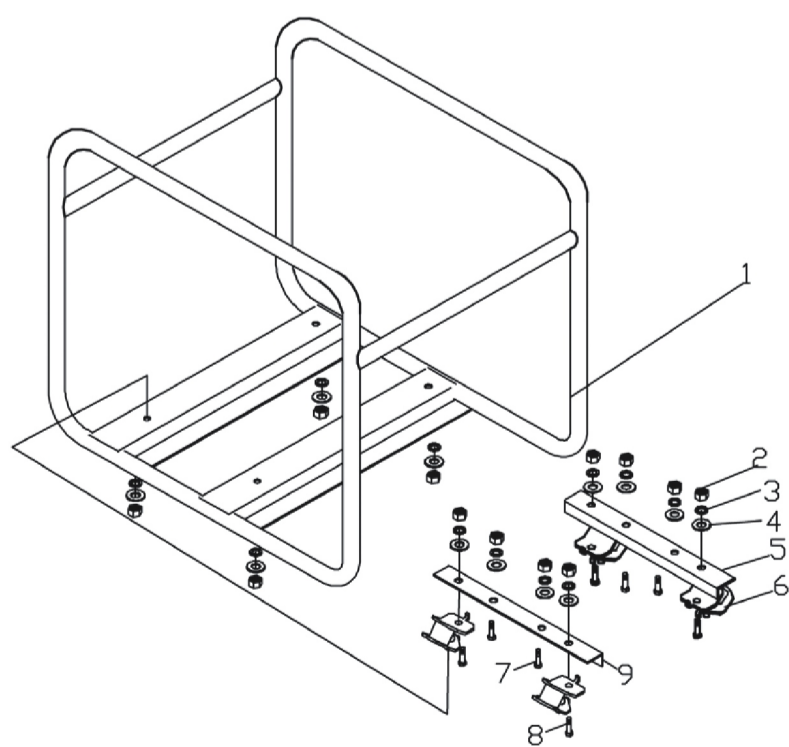


ASSEMBLY AND PARTS ALBUM



(1) 1.5" DEEP STROKE PUMP (40H₂BZ-01000)

No.	Code.	Description	Qty.	No.	Code.	Description	Qty.
1	GB5787-86	Hexagonal Flange Bolt	4	19	40H ₂ BZ-01200	Diffuser set	1
2	40H ₂ BZ-01005	Filler Water Cover	1	20	40H ₂ BZ-01017	Seal Plastic Bush	1
3	GB3452.1-92	O-ring	1	21	40H ₂ BZ-01300	Impeller Set	1
4	40H ₂ BZ-01012	Outlet Base	1	22	GB3452.1-92	O-ring	1
5	40H ₂ BZ-01011	Seal Ring	2	23	40H ₂ BZ-01004	Cushion	1
6	40H ₂ BZ-01009	Outlet Cover	2	24	GB5287-85	Outsize Gasket	1
7	40H ₂ BZ-01007	Seal Ring	1	25	GB93-87	Spring Gasket	1
8	40H ₂ BZ-01006	Outlet Cover	1	26	GB5783-86	Hexagonal Head Bolt	1
9	GB5782-86	Hexagonal Head Bolt	8	27	40H ₂ BZ-01015	Diffuser Cover	1
10	40H ₂ BZ-01001	Pump Cover	1	28	40H ₂ BZ-01019	Seal Bush	1
11	GB3452.1-92	O-ring	4	29	GB818-85	Cross Groove Pan Head Screw	1
12	GB97.1-85	Plain Washer	16	30	40H ₂ BZ-01016	Flap Valve Compaction Block	1
13	GB5782-86	Hexagonal Head Bolt	4	31	40H ₂ BZ-01400	Flap Valve Set	1
14	GB3452.1-92	O-ring	1	32	40H ₂ BZ-01013	Seal Cushion	1
15	40H ₂ BZ-01100	Mechanism Seal Set	1	33	40H ₂ BZ-01014	Pump Body	1
16	GB894.1-86	Spring Retaining Ring for Axle	1	34	GB861.1-86	Inner Tooth Locking Washer	8
17	40H ₂ BZ-01002	Connecting Long Axle	1	35	GB5782-86	Hexagonal Head Bolt	8
18	40H ₂ BZ-01003	Axle Sleeve	1	36	40H ₂ BZ-01018	Plug	1



No.	Code.	Description	Qty.
1	40H ₂ BZ-03000	Frame Weldment	1
2	GB6170-86	Nut M10	12
3	GB93-87	Spring washer 10	12
4	GB97.1-85	Washer 10	12
5	40H ₂ BZ-00002	Rake Angle Brandreth	1
6	40H ₂ BZ-02000	Damping Block Assembly	4
7	GB5781-86	Hexagonal Bolt M10×40	4
8	GB5781-86	Hexagonal Bolt M10×20	4
8	40H ₂ BZ-00001	Relief Angle Brandreth	1